



Trusted
Property Experts



Dunhill Avenue
Tile Hill CV4 9QG

Dunhill Avenue

CV4 9QG

* SPECIFICALLY FOR BUY TO LET INVESTORS * 1 BEDROOM FIRST FLOOR MAISONETTE * SINGLE PERSON PAYING £700 PER CALENDER MONTHS RENT *

Nestled in the cul-de-sac of Dunhill Avenue, Tile Hill, Coventry, this first floor maisonette presents an excellent opportunity for buy-to-let investors.

Currently let to a single occupant, the maisonette generates a steady rental income of £700 per calendar month, providing a reliable return on investment. The pleasant surroundings of the cul-de-sac offer a peaceful living environment, while still being conveniently located near local amenities and transport links.

With its current tenancy in place, this maisonette is ready to continue generating income from day one.

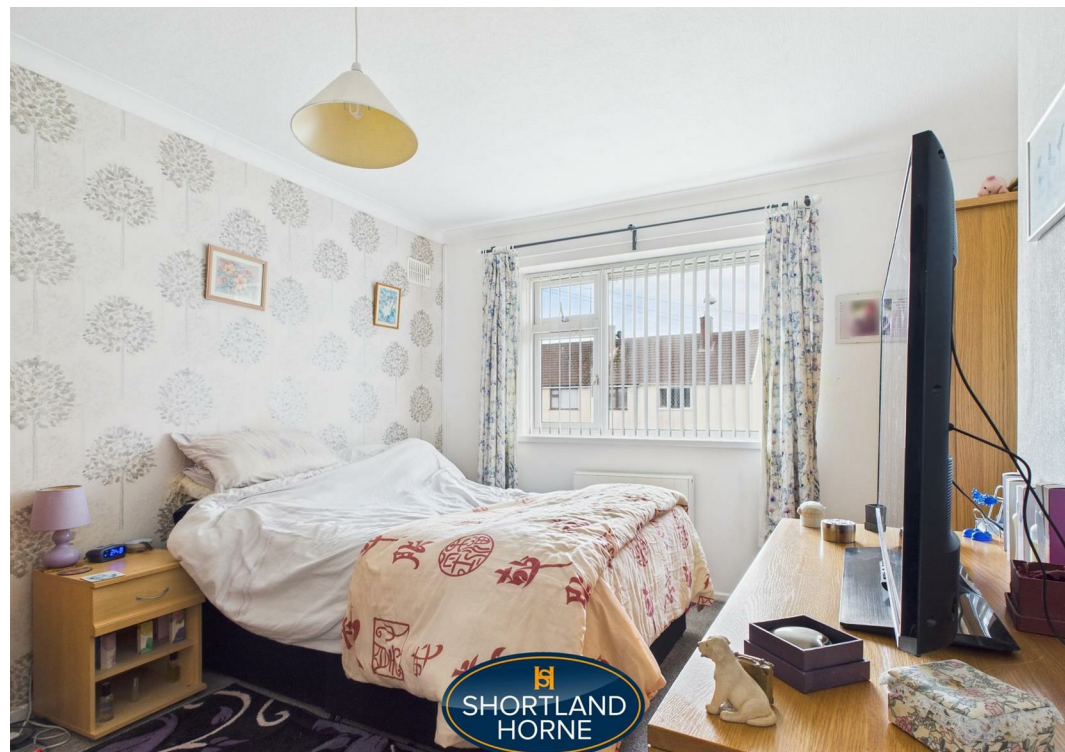
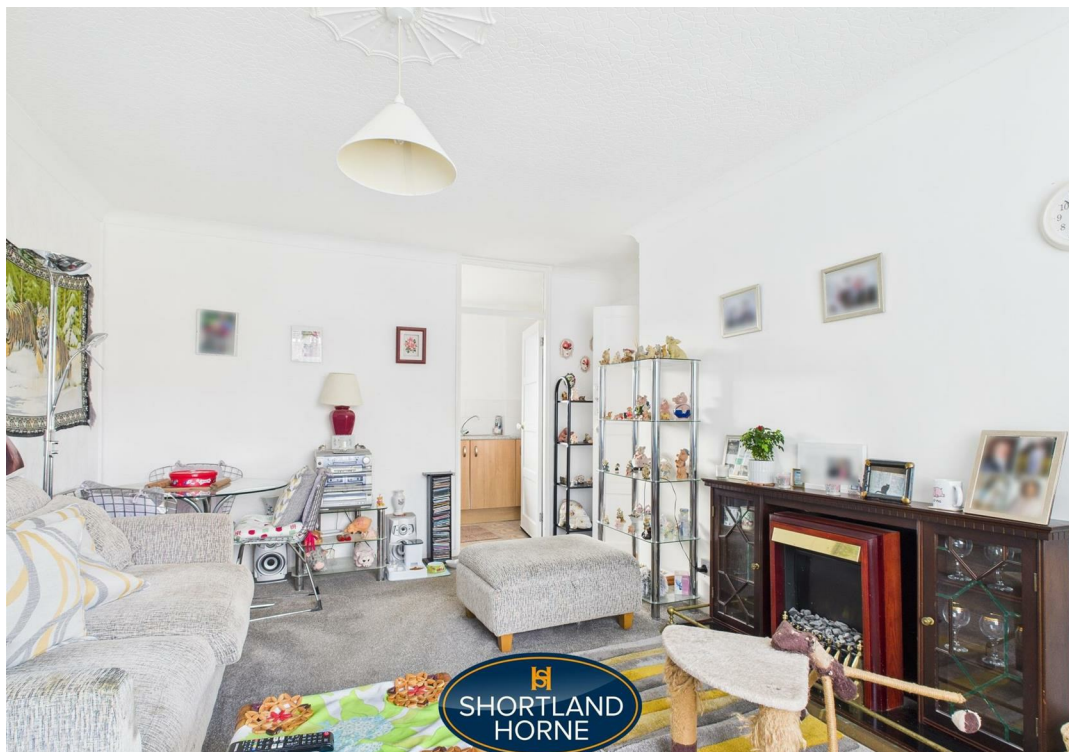
Length of Lease: 215 Year Lease As From 4th January 1982 With 172 Years Remaining.

We understand that there is No Service Charge that has been requested.

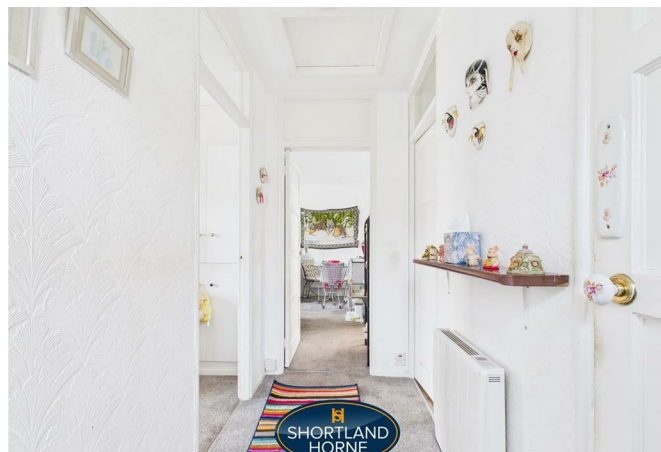
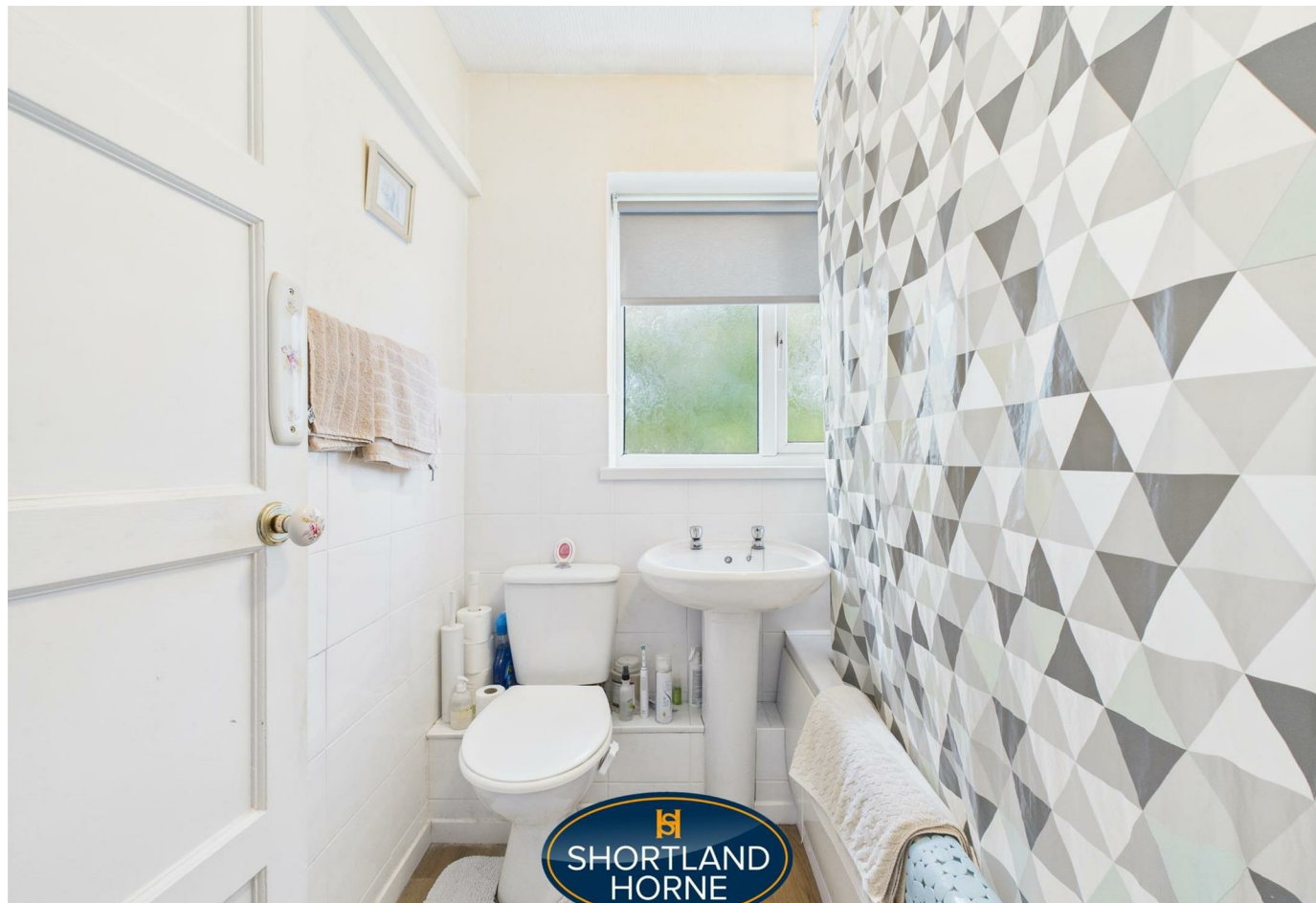
PLEASE NOTE THAT LEASE DETAILS ARE FOR GUIDANCE PURPOSES ONLY AND WE WOULD RESPECTFULLY REQUEST THAT YOU SEEK CLARIFICATION OF THE EXACT TERMS OF THE LEASE VIA YOUR SOLICITOR.

selling quality
property since 1995









Dimensions

ENTRANCE HALL

3.01 x 1.20

ATTRACTIVE LOUNGE

5.08 x 3.83

FITTED KITCHEN WITH HOB & OVEN

3.89 x 1.76

DOUBLE BEDROOM

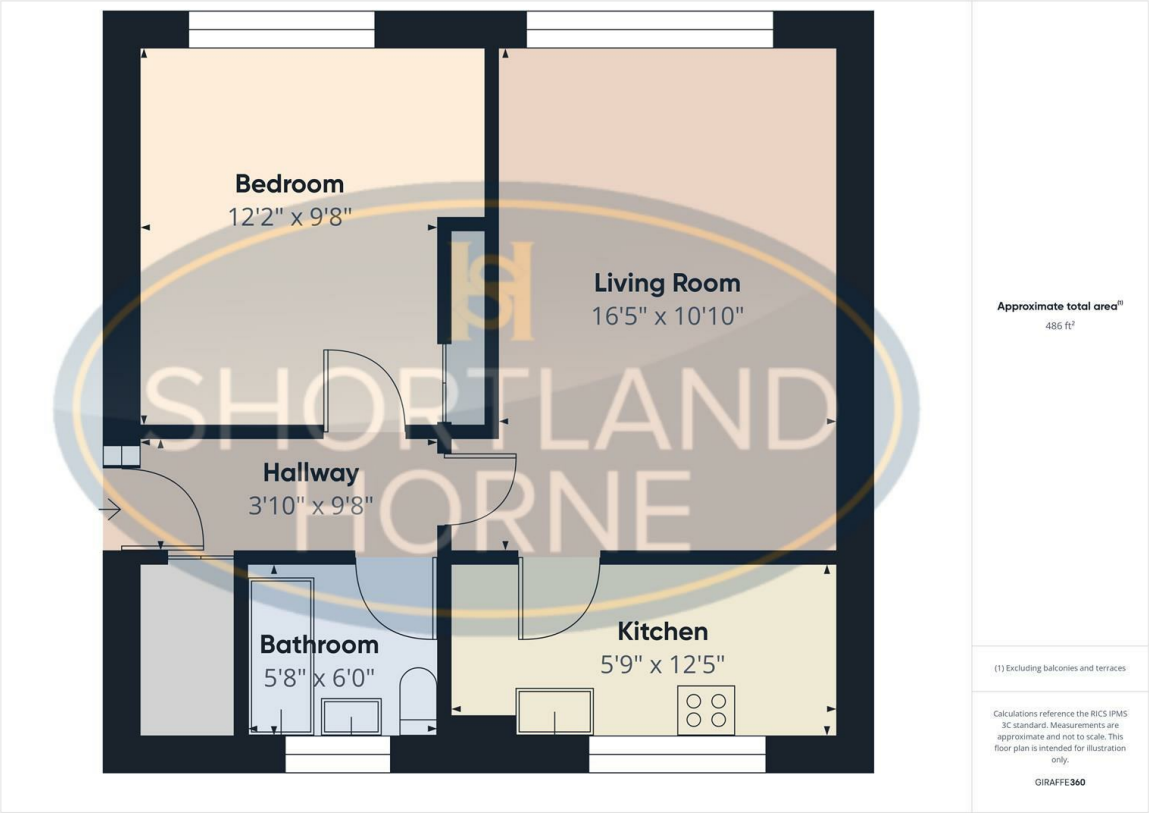
3.72 x 3.47

HALF TILED BATHROOM WITH SHOWER

1.75 x 1.73

COMMUNAL GARDENS

Floor Plan



Total area: sq ft

Disclaimer

Services All main services are understood to be available. Prospective purchasers are however recommended to verify connection with the appropriate suppliers.

Fixtures and Fittings Excluded unless referred to in the sale particulars. Photographs are for illustrative layout purposes only and items shown are not included unless specifically mentioned in contract documentation. Please note: wide angle lens photography may be used, in certain instances, sometimes resulting in slight distortion.

Viewing Strictly by arrangement through Shortland Horne.

Measurements Room measurements and floor plans are for guidance purposes only and are approximate.

Purchase Procedure It is essential to contact our offices before applying for a mortgage or arranging for a survey on this or any other Shortland Horne property to confirm current availability.

Money Laundering We have in place procedures and controls, which are designed to forestall and prevent Money Laundering. If we suspect that a supplier, customer/client, or employee is committing a Money Laundering offence as defined by the Proceeds of Crime Act 2002, we will in accordance with our legal responsibilities disclose the suspicion to the National Criminal Intelligence Service. Intending purchasers will be asked to produce identification documentation at a later stage and we would ask for your co-operation in order that there will be no delay in agreeing the sale.

Appliances We would ask that you note that the property may contain appliances that would warrant checking for satisfactory working condition and you may wish to arrange this at your own expense prior to legal commitment.

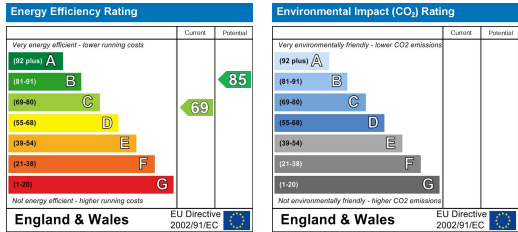
Referrals If Shortland Horne have introduced you to a Solicitor, Mortgage Advisor or Surveyor with whom we have a business relationship we are required by the Code of Conduct published by the NAEA propertymark to notify you that we will receive a referral fee. The fee for these services will vary depending on the transaction and intermediary may make to attract business.

Shortland Horne's Mortgage Advisor is Midland Financial Planning Limited, a partner practices of St. James's Place. For referring business to Midland Financial Planning Limited Shortland Horne will receive up to 50% of any commissions earned. You do not have to use the service of any of our providers and can choose to source the service from someone else. Any advice that is provided will be independent.

Location Map



EPC



02476 222 123

lettings@shortland-horne.co.uk @ShortlandHorne

shortland-horne.co.uk Shortland-Horne

Trusted
Property Experts